

Reduction of Unintentionally Produced Persistent Organic Pollutants (UPOPs) emissions by improving waste management practices at landfills

Stakeholders and institutional functions in waste management

GEF Project ID: 5558 – Component 2 - Development and Implementation of a Sustainable Management Mechanism for POPs in the Caribbean



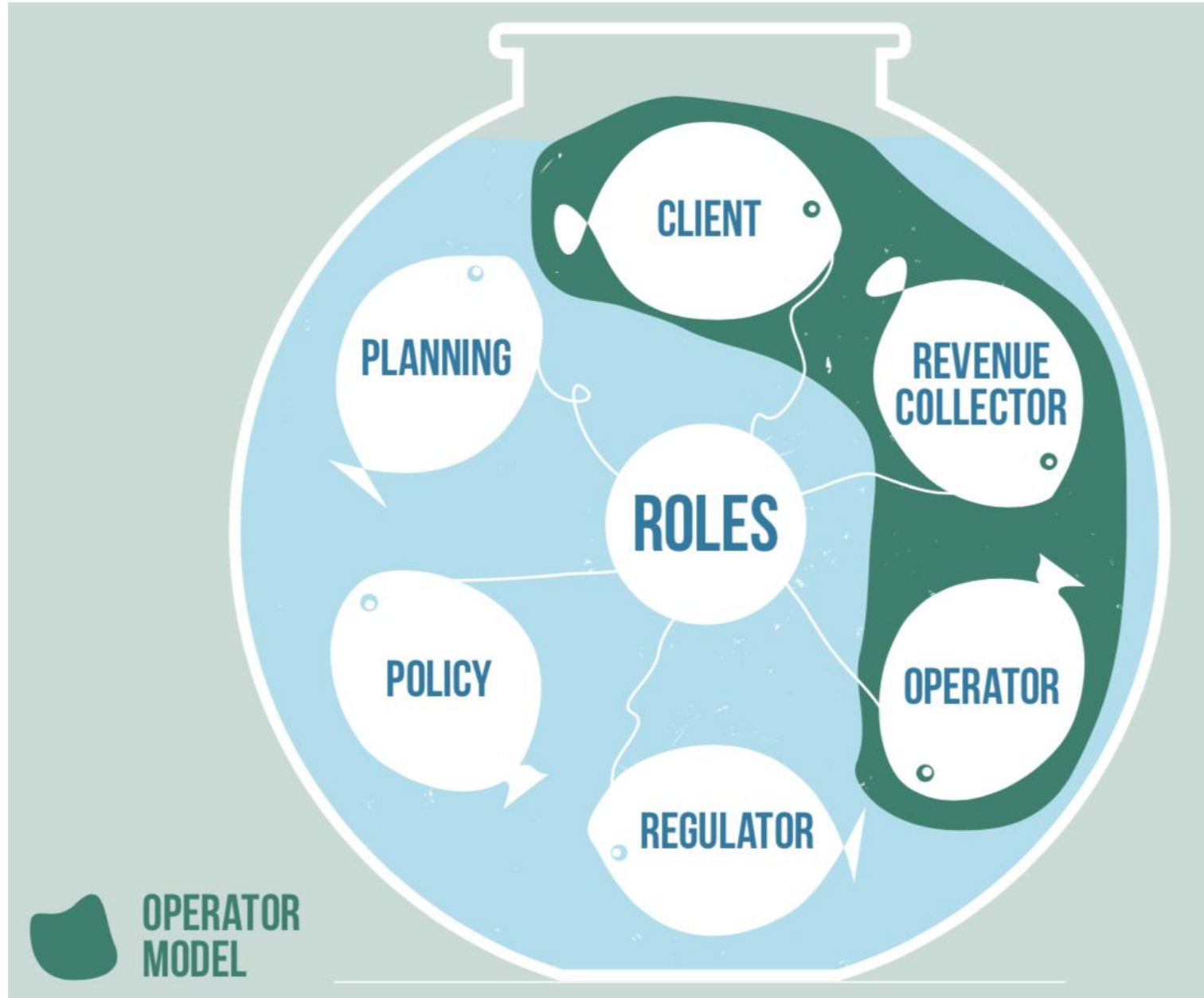
Review of the stakeholders engaged in waste management

Institutional functions

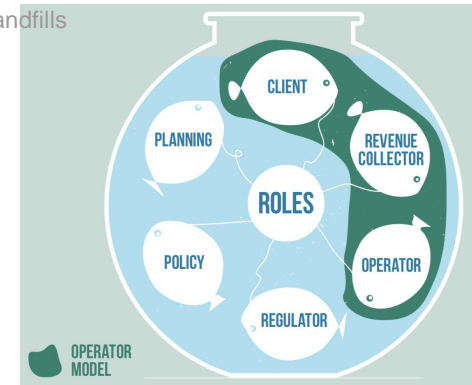
- **POLICY MAKER:** Sets the framework at National level that's implemented at Regional and Local levels which establish the legal standards within which services are delivered
- **REGULATOR:** responsible for monitoring and compliance with legal standards for environmental protection with respect to the service (includes Financial, Technical and Environmental regulator)
- **PLANNER:** responsibility for strategic and operational planning and general programming and control
- **CLIENT:** Responsible for ensuring the provision of a reliable waste management system meeting the required standards
- **OPERATOR:** responsible for delivery of the service on the ground
- **REVENUE COLLECTOR:** responsible for collection of revenue for the service

CLIENT + REVENUE COLLECTOR + OPERATOR = OPERATOR MODEL

Institutional functions



Policy maker

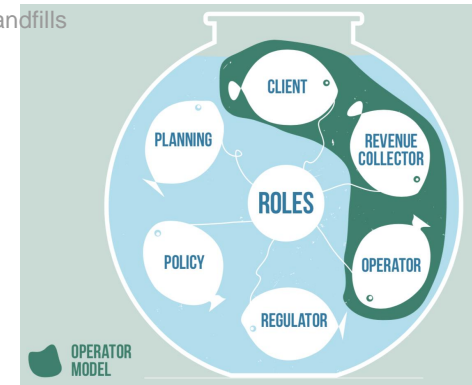


Policy – a plan or course of action intended to influence and determine decisions, actions, and other matters. Policy **shapes the legal, institutional framework, the financial framework, the planning framework and the market for delivery of services.**

In resource and waste management, there are many options, and the role of the policy maker is to **establish goals, set legislation, and shape the economic climate for the sector.**

Typically, part of the policy function is to ensure the balanced development of infrastructure and services across all territorial areas of a country, and to put in place mechanisms to deliver good practice, including financing and other economic instruments and incentives.

Regulator



The regulator controls or directs according to rule, principle, or law.

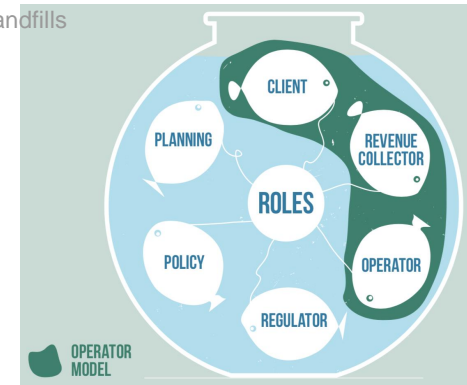
In the resource and waste management sector there are two-three main roles, financial, technical and environmental regulation.

The financial regulator allocates municipal revenue and audits expenditures.

The technical regulator approves technology selection and design standards.

The environmental regulator determines, and issue permits and licenses, and to follow-up and enforce the provisions contained within them – through the issuance of penalties and fines, and for prosecuting malpractice.

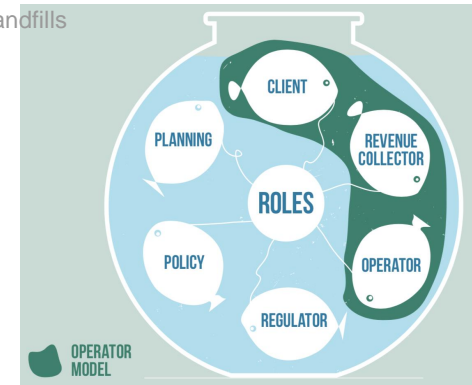
Planner



Planning can be defined as the process of setting goals, developing strategies, and outlining tasks and schedules to accomplish these goals. It is a multi-level process in which there is a diversity of stakeholder groups involved.

In the resource and waste management sector, it is important to secure the participation of different interest groups in the formulation of the overall goals and specific investments and measures.

Client (or employer)



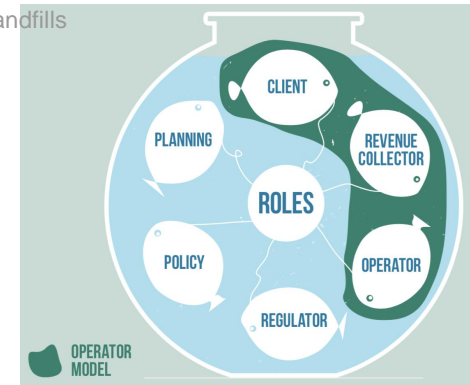
The Client (or employer) ‘ensures’ that services are delivered to the required standard, coverage and environmental performance.

This does not mean that they actually provide the services – rather that they make sure that the services are properly provided (by the operator, see below).

The Client sets the performance standards, supervises performance and manages contracts (where they exist). This function becomes more prominent once services have been contracted-out.

However, the Client function can also exist in public-run services, although less explicitly. There may be different Clients for different materials streams, and different links in the waste management service chain.

Operator



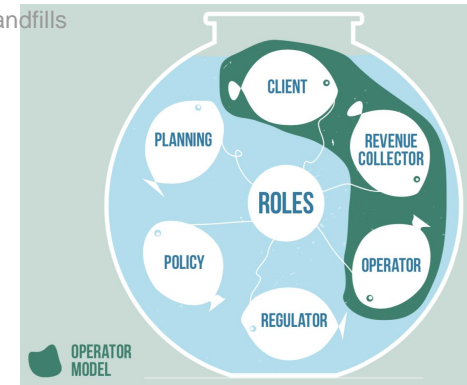
The operator is responsible for the day-to-day delivery of services.

These may include street sweeping, collection, transfer, treatment and disposal of waste, and extraction of resources throughout the waste management chain.

There are many different types of operator, including municipal departments, private sector (international/national), NGO/CBO, and informal.

Operators exist regardless of whether their contribution is formalised into a service contract.

Revenue collector

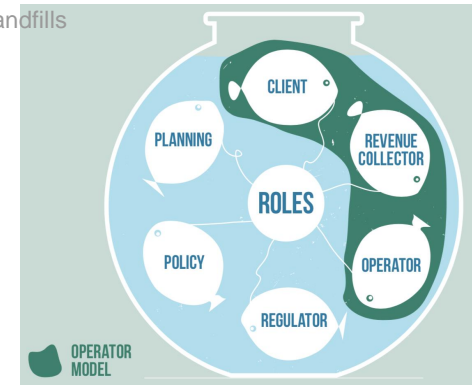


The role of the revenue collector is to ensure that sufficient money is collected from customers and Government transfers or borrowing to support the desired level of activity and performance of the resource and waste management sector.

Revenue from customers rarely covers the full costs of resource/waste management, however, in some places it does.

The need to bridge the financing gap creates a close (and sensitive) inter-dependency between the revenue collector and financial policy maker functions.

Change Agent



Institutions, people and their networks capable and responsible for making change happen.

Change agents can come in many different forms, as government departments/agencies, NGO's and limited companies.

A key role is being the information and education coordinator, ensuring that the correct information is disseminated to the correct people at the correct time to ensure sector success.

Key Stakeholders

Examples

| Entity* | Roles and Responsibilities* | Function* |
|--|--|---|
| Ministry of Health and Wellness | <ul style="list-style-type: none"> • Has overall regulatory responsibility for solid waste. • Authorise waste treatment facilities • Public Health Inspectors conduct inspections of hazardous substances and waste management facilities | <ul style="list-style-type: none"> • Policy Maker • Regulator (Environmental and Technical) |
| Ministry of Environment | <ul style="list-style-type: none"> • Responsible for waste management including policy making, regulatory functions and planning through the Environmental Protection Agency/Department and the Service provider/operator. | <ul style="list-style-type: none"> • Policy Maker |

*For example purposes, actual name may differ, as well as details in their mandate.

Key Stakeholders

| Entity* | Roles and Responsibilities* | Function* |
|--|---|---|
| Environmental Protection Agency/ Department | <ul style="list-style-type: none"> Mission statement to Protect and improve the country’s quality of life and its natural and built environment, through the promotion of sustainable practices, education, partnerships and the enforcement of legislation. | <ul style="list-style-type: none"> Change Agent |
| | <ul style="list-style-type: none"> Responsible for monitoring and regulation of solid waste management systems and facilities | <ul style="list-style-type: none"> Regulator (Technical and Environmental) Client |
| | <ul style="list-style-type: none"> Develop policies for the regulation of solid waste management | <ul style="list-style-type: none"> Planner Policy Maker |
| | <ul style="list-style-type: none"> Reviews hazardous waste disposal on a case-by-case basis in accordance with the material safety data sheet (MSDS) Relies on producers knowing the waste is hazardous and actively contacting the authority to get advice on the best way to proceed (either by local treatment or working with the producer to ensure they export it in accordance with Basel Convention rules.) | <ul style="list-style-type: none"> Regulator (Technical and Environmental) |

*For example purposes, actual name may differ, as well as details in their mandate.

Key Stakeholders

| Entity | Roles and Responsibilities | Function |
|--|--|---|
| <p>The service provider/ operator of waste management services and infrastructure</p> | <ul style="list-style-type: none"> Responsible for the collection and disposal of hazardous and/or non-hazardous solid waste from homes and government agencies country wide. | <ul style="list-style-type: none"> Client Operator |
| | <ul style="list-style-type: none"> Commercial arm which offers services to the private sector, for a fee | <ul style="list-style-type: none"> Operator Revenue Collector |
| | <ul style="list-style-type: none"> Operates waste disposal sites | <ul style="list-style-type: none"> Operator |

Key Stakeholders

| Entity* | Roles and Responsibilities* | Function* |
|---|---|--|
| Development and Planning Office /Department /Authority | <ul style="list-style-type: none"> Regulate all infrastructure developments and stipulate requirements for EIAs and chair the EIA review panel consisting of relevant government agencies. Review panel recommend requirements for impact mitigation and environmental monitoring which the Planning Office will stipulate in planning consent. In lack of specific system for permitting or licencing waste facilities, the town planning legislation and house services legislation should look at health and environmental concerns. | <ul style="list-style-type: none"> Planner Regulator (Technical and Environmental) |
| Ministry of Finance/ Economy & Investments | <ul style="list-style-type: none"> Regulate finances of government agencies, including those of public entities operating in the waste management system Assign capital investment finances | <ul style="list-style-type: none"> Policy Maker Regulator (financial) |
| Ministry of Agriculture | <ul style="list-style-type: none"> Administers the Pesticide Control Act and Analytical Services | <ul style="list-style-type: none"> Regulator (technical) Planner |

*For example purposes, actual name may differ, as well as details in their mandate.

Key Stakeholders

| Entity* | Roles and Responsibilities* | Function |
|---|---|---|
| Pesticide Control Unit/ Pesticide Control Board | <ul style="list-style-type: none"> Administers and Regulates the implementation of the Pesticide Control Act and updating the Act so that it is consistent and relevant to international standards and conventions. Provides guidance for the management of pesticides and Improve public awareness about pesticides. Participate in projects that contribute to improved environmental and public health situations | <ul style="list-style-type: none"> Regulator (Environmental) Change Agent |
| Government Analytical Services | <ul style="list-style-type: none"> Provides laboratory and analytical services. Important stakeholder for assessing and recommending local treatment solutions for hazardous and other chemical wastes. Important stakeholder in assessing environmental and public health damage of unsound waste management practices | <ul style="list-style-type: none"> Planner Regulator (technical) |
| Department of Legal Affairs / the Office of the Attorney General | <ul style="list-style-type: none"> Develop national legislation and regulations. | <ul style="list-style-type: none"> Policy Maker |

*For example purposes, actual name may differ, as well as details in their mandate.

Key Stakeholders

| Entity | Roles and Responsibilities | Function |
|--|--|---|
| Recycling Centres | <ul style="list-style-type: none"> Provide waste segregation and treatment services | <ul style="list-style-type: none"> Operator |
| National Water Authority | <ul style="list-style-type: none"> Often water charges include the Garbage and Sewage Contribution Levy, which are then proportionally transferred to transferred to service provider | <ul style="list-style-type: none"> Revenue Collector |
| Police | <ul style="list-style-type: none"> Enforce the provisions of legislation and conduct public outreach and education. | <ul style="list-style-type: none"> Regulator (Environmental) Change Agent |
| Emergency Management Authority/Department | <ul style="list-style-type: none"> Assume control and coordinate emergency relief efforts during major incidents including major waste management facility fires or hazardous waste contamination. Engages the local emergency organisations and volunteers to organize and coordinate the resources of the community to identify issues (including illegal dumping) and respond to major incidences. Conducts public awareness | <ul style="list-style-type: none"> Change Agent |

*For example purposes, actual name may differ, as well as details in their mandate.

Key Stakeholders

| Entity* | Roles and Responsibilities* | Function* |
|--|--|---|
| Fire Service | <ul style="list-style-type: none"> • First responders to waste fires and managing any fire incidents. • Is consulted in authorising the operation of waste management facilities | <ul style="list-style-type: none"> • Regulator |
| NGOs, civic organisations and commercial entities | <ul style="list-style-type: none"> • periodically convene public ‘clean-up’ events which are publicised | <ul style="list-style-type: none"> • Change Agent |
| Private Waste Haulers and Operators | <ul style="list-style-type: none"> • Private waste companies collecting waste on behalf of public operator and direct from commercial and industrial clients. | <ul style="list-style-type: none"> • Operator • Revenue Collector |
| Producers of hazardous wastes | <ul style="list-style-type: none"> • Responsible for identifying and managing their hazardous waste that they produce. | <ul style="list-style-type: none"> • Client |
| Rum distilleries/ cement factories | <ul style="list-style-type: none"> • Operate industrial boilers and kilns that can utilise waste oils or other types of waste | <ul style="list-style-type: none"> • Operator |

*For example purposes, actual name may differ, as well as details in their mandate.

Stakeholder Exercise – Roles & Responsibilities

For each waste type/stream

| Function | Key Stakeholders | |
|---|------------------|-----------------|
| | Current | Possible Future |
| Waste Generator/s | | |
| Management option (Landfill, treatment, storage, etc.) | | |
| Client | | |
| Operator (collection & management option) | | |
| Revenue Collector / source | | |
| Regulator (Tech, Enviro, Finance) | | |
| Policy Maker | | |
| Planners | | |
| Change Agent (comms) | | |